

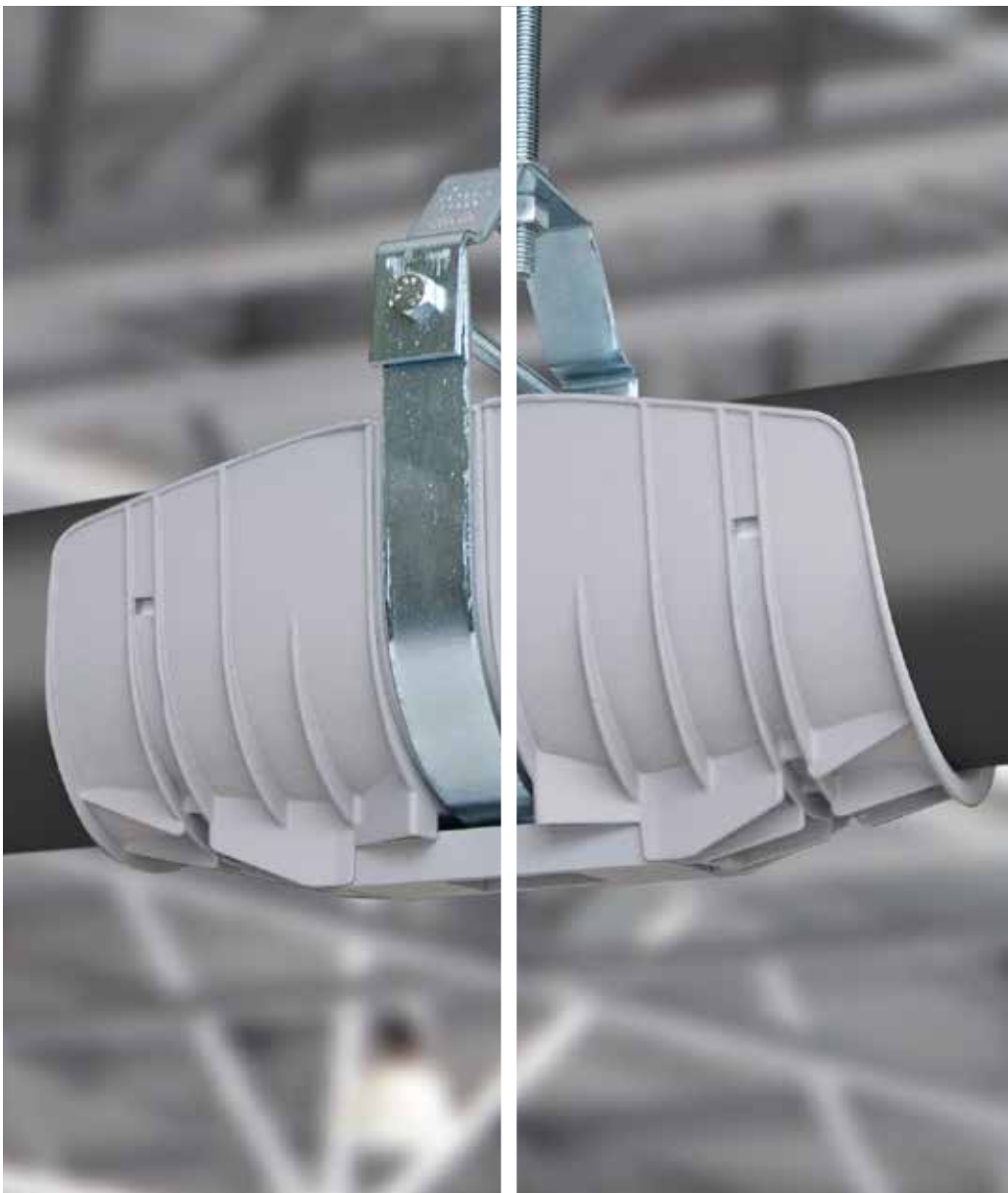
THE SIMPLE SOLUTION

# Insuguard

Armacell's Insuguard®, Insuguard® Multi and the family of accessories protect piping and its insulation from damage caused by pipe expansion and contraction. Allowing pipe movement within the support system minimizes maintenance and reduces energy loss. **Tool-free, it installs with just one click!**

- // Prevents rotation or displacement of saddles and damage to all insulation types
- // Solutions for all types and sizes of suspension systems
- // For plumbing, HVAC and refrigeration piping or even communications lines

[www.armacell.us](http://www.armacell.us) | [www.insuguard.com](http://www.insuguard.com)



 **armacell**<sup>®</sup>  
Insuguard<sup>®</sup>

# ONE CLICK SIMPLE INSTALLATION

When installing and maintaining pipe systems, the right combination of insulation, vapor retarder, and support system minimizes energy loss, maintains the pipe's structural integrity, and keeps the pipe system in place. However, get even one component wrong, and you risk substandard system operation and/or expensive repairs.

Pipe suspension and mounting systems support the weight of a pipe by transmitting the load to the adjacent structure. These systems also need to avoid damaging the pipe insulation at the contact points, especially during the severe linear movements that pipes can undergo due to normal thermal expansion and contraction.

In large installations such as supermarkets, pipe runs can exceed a mile long, which could expand and contract significant amounts introducing more potential failure points if the wrong support is specified. Damaged insulation and pipes compromise energy delivery, making critical refrigeration systems underperform.



Insuguard Multi pipe saddle shown with 1-click clevis adapter, above.

Original Insuguard pipe saddles are the one-piece solution for strut mount installations. It simply snaps on the strut and allows the pipe and insulation to expand and contract as needed, above right.

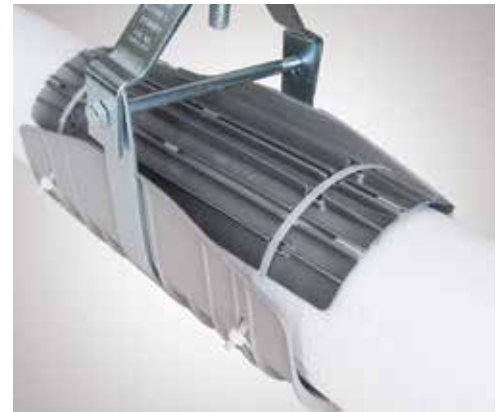


Potential issues with pipe suspension or mounting systems include shifting/falling saddles, condensation and mold growth, freezing and thawing, refrigerant leaks, insulation tear-off, and inefficient labor and material use. With normal pipe movement and expansion, saddles can slip out of place, exposing the insulation to pressure and compression. For cold systems, thermal bridging

can cause condensation, ice formation, and corrosion of the pipe and support. When supports fail, the insulated pipe run is unprotected from friction at the support points, tearing the insulation, leaving critical lines exposed. If these lines are inside a chase, the problem can go undetected causing serious property damage. Unsecured saddles that fall from the suspension system create serious safety and liability concerns.

Every adapter simply clicks into the Insuguard Multi channel. clevis adapter shown below, angle mount adapter, right.

InsuCover is secured with cable ties through the matching notches in the saddle, below right.



## PIPE SADDLES AND ACCESSORIES

Avoid these issues with Armacell's complete line of pipe saddles and accessories that eliminate common support problems AND will save time during installation.

Pipe movement is accommodated with **Insuguard's** rounded edge design that curves away from the pipe at both ends and protects the insulation when

expansion or contraction occurs.

**Insuguard Multi** saddles and adapters simply click in place to connect to any type of suspension or mounting system, regardless of size. Both systems are compatible with adjustable **InsuCover** which protects pipes. **InsuClip** and **ShockTech** are specially designed to work with the clevis adapter of Insuguard Multi.

**SAVE TIME WITH QUICK AND EASY, TOOL-FREE INSTALLATION OF PIPE SADDLES AND ACCESSORIES.**

### Insuguard

Original 1-piece pipe saddle designed for strut applications. Available in black and white.



### Insuguard Multi

Pipe saddle systems with interchangeable adapters for strut, clevis, H-beam, I-beam, steel angle and floor mounts.



### InsuCover

Pipe cover that shields the top of the pipe from damage. Adjustable width, attaches with cable ties.



### ShockTech

Magnetic water hammer detector with interchangeable color-coded flags for use with clevis adapter.



### InsuClip

Two-way fastener designed to secure piping or cables in the free space above the clevis cross bar.



## PREVENT THERMAL BRIDGING



Insulation compression at suspension locations breaks the thermal barrier. This results in thermal bridging and could cause condensation, freezing points and mold growth.



Insuguard saddles have high walls which protect the liquid lines from strut, threaded rod and hangers and carry the weight of the pipe without thermal bridging.

## AVOID FALLING OVERHEAD PIPE SADDLES



Conventional saddles can slip out of place due to normal pipe movement and expansion. This exposes people to overhead dangers and creates serious safety and liability concerns.



The "click" sound indicates that the pipe support adapter is securely installed in the saddle. Additional features also ensure that the pipe saddle is reliably attached to the strut channel, clevis hanger or steel angle.

## ELIMINATE INSULATION TEAR-OFF



With standard metal or plastic supports, insulation tear-off occurs with pipe saddle displacement and exposes critical lines to the effects of friction.



Insuguard's revolutionary curved edge saddle design allows the insulated pipe to expand and vibrate within the support with no possibility of tear-off.



INSUGUARD

# WHY INSUGUARD?



## THE BEST PIPE SUPPORT SYSTEM

Made of high quality, ultra-resistant polypropylene and an innovative design that distributes the weight of the piping system over a wider area, Insuguard is the **most practical solution** available today to:

1. Improve appearance with standardized pipe installations
2. Eliminate premature insulation tears, costly leaks and loss of refrigerated merchandise.



The curved lip of the all Insuguard saddles allow insulated pipe to move easily across the saddle without causing any damage or insulation tear-off. This is especially important to prevent condensation from building up on below ambient temperature lines. In open ceilings like supermarkets, condensation or freezing can cause moisture ingress as well as dripping that could be a danger to people below.

## FAST, TOOL-FREE INSTALLATION

**Insuguard** saddles prevent the problems of pipe expansion, but it's also easier and quicker to install



than metal or plastic shields or fussing with gluing traditional saddles. With just 1-click you can install Insuguard on struts, quickly moving down the line. With **Insuguard Multi**, no matter what type of support system you have — strut, steel angle, H-beam, I-beam, clevis or even floor mounts — you can use perfectly-sized saddles with interchangeable mount adapters. This keeps installation on track with the peace of mind that your piping is secure, yet flexible.

## USE DEDICATED ACCESSORIES FOR MORE VERSATILITY

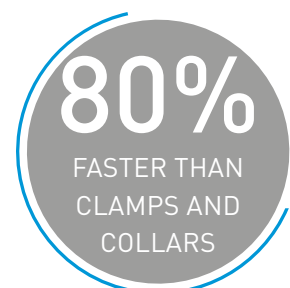
Both Insuguard and Insuguard Multi are compatible with the **InsuCover** pipe shield. The handy pipe cover is segmented so that it fits the curve of both large and small pipes, and can be cut to fit the exact pipe diameter.



For Insuguard Multi saddles using the clevis adapter there are two other great accessories. The innovative **ShockTech** magnetic water hammer detector uses color coded flags that are triggered by different shock tolerances. These flags will warn maintenance of trouble spots before water hammer can cause permanent pipe damage.



The **InsuClip** two-way fastener lets you take advantage of the empty space above the clevis cross bar and run additional piping or cables without installing more supports.



All data and technical information are based on results achieved under the specific conditions defined according to the testing standards referenced. Despite taking every precaution to ensure that said data and technical information are up to date, Armacell does not make any representation or warranty, express or implied, as to the accuracy, content or completeness of said data and technical information. Armacell also does not assume any liability towards any person resulting from the use of said data or technical information. Armacell reserves the right to revoke, modify or amend this document at any moment. It is the customer's responsibility to verify if the product is suitable for the intended application. The responsibility for professional and correct installation and compliance with relevant building regulations lies with the customer. This document does not constitute nor is part of a legal offer to sell or to contract.

At Armacell, your trust means everything to us, so we want to let you know your rights and make it easier for you to understand what information we collect and why we collect it. If you would like to find out about our processing of your data, please visit our **Data Protection Policy**.

© Armacell, 2020. Insuguard, InsuCover, InsuClip and ShockTech are trademarks of the Armacell Group.  
00XXX| Insuguard | Mktbrochure | 112020 | NA | EN-A

## ABOUT ARMACELL

---

As the inventors of flexible foam for equipment insulation and a leading provider of engineered foams, Armacell develops innovative and safe thermal, acoustic and mechanical solutions that create sustainable value for its customers. Armacell's products significantly contribute to global energy efficiency making a difference around the world every day. With 3,135 employees and 24 production plants in 16 countries, the company operates two main businesses, Advanced Insulation and Engineered Foams. Armacell focuses on insulation materials for technical equipment, high-performance foams for high-tech and lightweight applications and next generation aerogel blanket technology.

For more information, please visit:  
[www.armacell.us](http://www.armacell.us)  
[info.us@armacell.com](mailto:info.us@armacell.com)  
800-866-5638



THE SIMPLE SOLUTION

# Insuguard Multi

Thanks to Insuguard® Multi, there's an adapter for strut, H-Beam, I-Beam, floor-mount, clevis and steel angle mountings. Prevents rotation or displacement of saddles and damage to all insulation types. **Installs with one click in seconds!**

// For plumbing piping

// HVAC piping

// Refrigeration lines

[www.armacell.us](http://www.armacell.us) | [www.insuguard.com](http://www.insuguard.com)



 **armacell**<sup>®</sup>  
Insuguard<sup>®</sup>

## TECHNICAL DATA - INSUGUARD MULTI

|                   |  |
|-------------------|--|
| Brief description | Insuguard Multi is a saddle-shaped pipe support with interchangeable clipping cartridges - also known as clipping adapters, that can be used on any pipe suspension system, including various strut channel sizes, clevis hangers or steel angles. Insuguard saddles are applicable with all insulation products.  |
| Material          | 20% glass-filled polypropylene.  |
| Color             | Silver grey.   |
| Special features  | The inside surface of the saddle-shaped pipe support is non-adhesive and has a special texture that acts as micro bubbles to create a thin film of air between the saddle and the insulation. This helps the insulated pipe to expand and move freely within the saddle without damaging the insulation material. All clipping cartridges can fit any saddle size. |
| Applications      | Horizontal pipe installation on plumbing, mechanical, refrigeration and air-conditioning applications.   |
| Installation      | All Insugard Multi clipping cartridges can be quickly installed in one simple action without any tools, except the floor adapter. Watch the installation videos to find out more.  |

| Property                     | Value/Assessment                                | Standard/Test method |  |
|------------------------------|---|----------------------|--|
| Temperature range            |   |                      |  |
| Service temperature          | Max. service temperature                        | +178 °F (+81 °C)     |  |
|                              | Min. service temperature                        | -40 °F (-40 °C)      |  |
| Fire performance & approvals |   |                      |  |
| Surface spread of flame      | UL classified for the United States of America. | ASTM E84 (UL-723)    | Flame Spread Index 110/Smoke Developed Index 500 |
|                              | ULC listed for Canada.                          | ULC-S102.2           | Flame Spread Index 120/Smoke Developed Index 450 |
| Other technical features     |   |                      |  |
| UV resistance                | Excellent                                       |                      |  |



## SPECIFICATION SHEET

### INSUGUARD MULTI SADDLE (GRAY)

| Part number        | Inside dimension |       | Length |       |
|--------------------|------------------|-------|--------|-------|
|                    | [inch]           | [mm]  | [inch] | [mm]  |
| <b>PTBCIM250G</b>  | 2.34"            | 60mm  | 12"    | 305mm |
| <b>PTBCIM350G</b>  | 3.45"            | 88mm  | 12"    | 305mm |
| <b>PTBCIM450G</b>  | 4.50"            | 114mm | 12"    | 305mm |
| <b>PTBCIM550G</b>  | 5.56"            | 140mm | 12"    | 305mm |
| <b>PTBCIM650G</b>  | 6.46"            | 165mm | 12"    | 305mm |
| <b>PTBCIM850G</b>  | 8.65"            | 219mm | 18"    | 457mm |
| <b>PTBCIM1050G</b> | 10.65"           | 271mm | 23"    | 584mm |
| <b>PTBCIM1250G</b> | 12.65"           | 321mm | 23"    | 584mm |





## UNIVERSAL ADAPTER DESIGN

All adapters fit all sizes of Insuguard Multi saddles. Choose the adapter that fits the suspension system you need and it will fit the saddle.



### STRUT MOUNT ADAPTER

| Part number           | Fits strut width |      | Fits strut depth |       |
|-----------------------|------------------|------|------------------|-------|
|                       | [inch]           | [mm] | [inch]           | [mm]  |
| <b>IPTBCIM30X30G</b>  | 1-3/16"          | 30mm | 1-3/16"          | 30mm  |
| <b>IPTBCIM31x43G</b>  | 1-5/64"          | 31mm | 1-11/16"         | 43mm  |
| <b>IPTBCIM40X38G</b>  | 1-9/16"          | 40mm | 1-1/2"           | 38mm  |
| <b>IPTBCIM42X20G</b>  | 1-5/8"           | 42mm | 13/16"           | 20mm  |
| <b>IPTBCIM42X42G</b>  | 1-5/8"           | 42mm | 1-5/8"           | 42mm  |
| <b>IPTBCIM42X84G</b>  | 1-5/8"           | 42mm | 3-1/4"           | 84mm  |
| <b>IPTBCIM42X166G</b> | 1-5/8"           | 42mm | 6-1/2"           | 166mm |
| <b>IPTBCIM4D21G</b>   | 2-1/8"           | 54mm | 1-1/16"          | 27mm  |
| <b>IPTBCIM4D22G</b>   | 2-1/8"           | 54mm | 2-1/8"           | 54mm  |

### STEEL ANGLE MOUNT ADAPTER

| Part number          | Fits steel angle size   |
|----------------------|---|
| <b>IPTBCIM2-5/8G</b> | 0.125" to 0.625" thick x 1" to 2.62" lip (3mm to 16mm thick x 25mm to 66mm lip) |

### CLEVIS U-STRAP MOUNT ADAPTER

| Part number      | Fits clevis hangers:   |
|------------------|------------------------|
| <b>IMCLEVISG</b> | Up to 1.9" (48mm) wide |

**STRUT STABILIZER** (Designed to support large size IPTBCIM1050G and IPTBCIM1250G saddles on strut mounts)

| Part number             | Length |       | Width  |      | Radius |       |
|-------------------------|--------|-------|--------|------|--------|-------|
|                         | [inch] | [mm]  | [inch] | [mm] | [inch] | [mm]  |
| <b>IPTBCIMSTAB1050G</b> | 10.34" | 263mm | 2.24"  | 57mm | 5.13"  | 130mm |
| <b>IPTBCIMSTAB1250G</b> | 11.38" | 289mm | 2.28"  | 58mm | 6.13"  | 156mm |

**FLOOR ADAPTER** (Designed to support large size IM1050G and IM1250G saddles on floor)

| Part number                | Associated parts   |
|----------------------------|--|
| <b>IPTBCIM FLOOR10-12G</b> | Use with IPTBCIMSTAB1050G or IPTBCIMSTAB1250G for floor mounting |

### H-BEAM ADAPTER

| Part number          | Fits beams                    |
|----------------------|-------------------------------|
| <b>IPTBCIMHBEAMG</b> | 3.5" to 8.87" (89mm to 225mm) |



## ACCESSORIES

Armacell offers a full line of value-add accessories for the Insuguard Multi line of pipe saddles.

### PIPE SHIELD

#### InsuCover®

InsuCover pipe cover is designed to fit over the insulated pipe and can be quickly secured with cable ties since both the saddle and the cover have matching notches for easy tool-free installation. The flexible design allows it to automatically adjust to the pipe's curve, large and small. A quick knife cut at the seams allows the installer to customize the width for smaller pipes. Its curved edges allow for the same range of movement as the Insuguard Multi saddle, keeping the pipe supported, secure, but able to give to natural pipe expansion.

#### InsuCover Pipe Shield

| Part number      | Size   |       | Color | For use with   |
|------------------|--------|-------|-------|--|
|                  | [inch] | [mm]  |       |  |
| <b>PTBUCX50G</b> | 12"    | 305mm | Gray  | PTBCIM250G, PTBCIM350G, PTBCIM450G, PTBCIM550G, PTBCIM650G |
| <b>PTBUCL50G</b> | 18"    | 457mm | Gray  | PTBCIM850G, PTBCIM1050G, PTBCIM1250G                       |

| Property                        | Value/Assessment                                    | Test method |
|---------------------------------|---|-------------|
| <b>Temperature range</b>        |   |             |
| Max. service temperature        | +178 °F (+81 °C)                                    |             |
| Min. service temperature        | -40 °F (-40 °C)                                     |             |
| <b>Other technical features</b> |   |             |
| UV resistance                   | Excellent   |             |
| Paintable                       | Preserves mechanical properties even after painting |             |



## PIPE FASTENER

InsuClip®

/ 05

Now you can take advantage of the extra space above a clevis hanger. The InsuClip was designed to be an economical pipe fastener to securely fasten uninsulated refrigeration lines, water pipes, electrical cables or communications cables within the free space available above the cross-bolt of clevis hangers. No need to install separate pipe hangers, just use the free space in the upper area of the existing pipe hangers which can accommodate holding additional pipes or cables up to 2.25" (57 mm) in diameter. This clever, inexpensive fastener will save you time and money when your customers need to add an extra pipe run or cabling to an existing installation.

### InsuClip Pipe Fastener

| Part number        | For use with                                   |
|--------------------|--|
| <b>PTBCIMP050G</b> | OD pipe size 0.25" to 0.688" (6.3mm to 17.5mm) |
| <b>PTBCIMP125G</b> | OD pipe size 0.625" to 1.25" (16mm to 32mm)    |
| <b>PTBCIMP175G</b> | OD pipe size 1.31" to 1.75" (33mm to 44mm)     |
| <b>PTBCIMP225G</b> | OD pipe size 1.75" to 2.25" (44mm to 57mm)     |



| Property                        | Value/Assessment                                    | Test method |
|---------------------------------|---|-------------|
| <b>Temperature range</b>        |   |             |
| Max. service temperature        | +178 °F (+81 °C)                                    |             |
| Min. service temperature        | -40 °F (-40 °C)                                     |             |
| <b>Other technical features</b> |   |             |
| UV resistance                   | Excellent   |             |
| Paintable                       | Preserves mechanical properties even after painting |             |

## SHOCK DETECTOR

ShockTech®

The ShockTech shock detector indicates water hammer problems before pipe damage can occur. Three interchangeable color-coded flags are included to help maintenance spot trouble areas right away. Each magnetic flag is triggered by a different shock intensity: Yellow > 1.8G, Orange > 1.6G and Red > 1.4G (Downward Allowable Stress Design). ShockTech clips onto the bottom of the clevis adapter with a simple click, just like the other tool-free adapters from Armacell's Insuguard.

### Shock Detector

| Part number          | For use with      |
|----------------------|-------------------|
| <b>PTBCSHOCKTECH</b> | IMCLEVISG Adapter |



| Property                     | Value/Assessment      | Test method      |  |
|------------------------------|-----------------------|------------------|--|
| Temperature range            |                       |                  |  |
| Max. service temperature     | +178 °F (+81 °C)      |                  |  |
| Min. service temperature     | -40 °F (-40 °C)       |                  |  |
| Fire performance & approvals |                       |                  |  |
| Surface spread of flame      | UL Classified for US  | UL-723, ASTM E84 | Flame Spread Index 110/Smoke Developed Index 500 |
|                              | ULC Listed for Canada | ULC-S102.2       | Flame Spread Index 120/Smoke Developed Index 450 |
| Other technical features     |                       |                  |  |
| UV resistance                | Excellent             |                  |  |

Use the following two tables to quickly identify the right pipe support for your project.

## Copper tubes

| Pipe size     | Insulation thickness |                 |               |                   |               |
|---------------|----------------------|-----------------|---------------|-------------------|---------------|
|               | 1/2 inch (13mm)      | 3/4 inch (19mm) | 1 inch (25mm) | 1-1/2 inch (38mm) | 2 inch (50mm) |
| 1/4" (6MM)    | IPTBCIM250G          | IPTBCIM250G     | IPTBCIM350G   | IPTBCIM350G       | IPTBCIM450G   |
| 3/8" (10MM)   | IPTBCIM250G          | IPTBCIM250G     | IPTBCIM350G   | IPTBCIM450G       | IPTBCIM450G   |
| 1/2" (13MM)   | IPTBCIM250G          | IPTBCIM250G     | IPTBCIM350G   | IPTBCIM450G       | IPTBCIM550G   |
| 5/8" (16MM)   | IPTBCIM250G          | IPTBCIM250G     | IPTBCIM350G   | IPTBCIM450G       | IPTBCIM550G   |
| 3/4" (19MM)   | IPTBCIM250G          | IPTBCIM350G     | IPTBCIM350G   | IPTBCIM450G       | IPTBCIM550G   |
| 1" (25MM)     | IPTBCIM250G          | IPTBCIM350G     | IPTBCIM350G   | IPTBCIM450G       | IPTBCIM550G   |
| 1-1/4" (31MM) | IPTBCIM350G          | IPTBCIM350G     | IPTBCIM350G   | IPTBCIM450G       | IPTBCIM550G   |
| 1-1/2" (38MM) | IPTBCIM350G          | IPTBCIM350G     | IPTBCIM450G   | IPTBCIM550G       | IPTBCIM650G   |
| 2" (50MM)     | IPTBCIM350G          | IPTBCIM450G     | IPTBCIM450G   | IPTBCIM550G       | IPTBCIM650G   |
| 2-1/2" (63MM) | IPTBCIM450G          | IPTBCIM450G     | IPTBCIM550G   | IPTBCIM650G       | IPTBCIM850G   |
| 3" (75MM)     | IPTBCIM450G          | IPTBCIM550G     | IPTBCIM550G   | IPTBCIM650G       | IPTBCIM850G   |
| 3-1/2" (88MM) | IPTBCIM550G          | IPTBCIM550G     | IPTBCIM650G   | IPTBCIM850G       | IPTBCIM850G   |
| 4" (100MM)    | IPTBCIM550G          | IPTBCIM650G     | IPTBCIM650G   | IPTBCIM850G       | IPTBCIM850G   |

## SCH 40/80 pipe

| Pipe size     | Insulation thickness |                 |               |                   |               |                   |              |                   |                |
|---------------|----------------------|-----------------|---------------|-------------------|---------------|-------------------|--------------|-------------------|----------------|
|               | 1/2 inch (13mm)      | 3/4 inch (19mm) | 1 inch (25mm) | 1-1/2 inch (38mm) | 2 inch (50mm) | 2-1/2 inch (63mm) | 3 inch (6mm) | 3-1/2 inch (89mm) | 4 inch (102mm) |
| 1/4" (6MM)    | IPTBCIM250G          | IPTBCIM250G     | IPTBCIM350G   | IPTBCIM450G       | IPTBCIM550G   | IPTBCIM550G       | IPTBCIM650G  | IPTBCIM850G       | IPTBCIM850G    |
| 3/8" (10MM)   | IPTBCIM250G          | IPTBCIM250G     | IPTBCIM350G   | IPTBCIM450G       | IPTBCIM550G   | IPTBCIM550G       | IPTBCIM650G  | IPTBCIM850G       | IPTBCIM850G    |
| 1/2" (13MM)   | IPTBCIM250G          | IPTBCIM250G     | IPTBCIM350G   | IPTBCIM450G       | IPTBCIM550G   | IPTBCIM650G       | IM850G       | IPTBCIM850G       | IPTBCIM1050G   |
| 3/4" (19MM)   | IPTBCIM250G          | IPTBCIM350G     | IPTBCIM350G   | IPTBCIM450G       | IPTBCIM550G   | IPTBCIM650G       | IPTBCIM850G  | IPTBCIM850G       | IPTBCIM1050G   |
| 1" (25MM)     | IPTBCIM250G          | IPTBCIM350G     | IPTBCIM350G   | IPTBCIM450G       | IPTBCIM550G   | IPTBCIM650G       | IPTBCIM850G  | IPTBCIM850G       | IPTBCIM1050G   |
| 1-1/4" (31MM) | IPTBCIM350G          | IPTBCIM350G     | IPTBCIM450G   | IPTBCIM550G       | IPTBCIM650G   | IPTBCIM850G       | IPTBCIM850G  | IPTBCIM1050G      | IPTBCIM1050G   |
| 1-1/2" (38MM) | IPTBCIM350G          | IPTBCIM350G     | IPTBCIM450G   | IPTBCIM550G       | IPTBCIM650G   | IPTBCIM850G       | IPTBCIM850G  | IPTBCIM1050G      | IPTBCIM1050G   |
| 2" (50MM)     | IPTBCIM350G          | IPTBCIM450G     | IPTBCIM450G   | IPTBCIM550G       | IPTBCIM650G   | IPTBCIM850G       | IPTBCIM850G  | IPTBCIM1050G      | IPTBCIM1050G   |
| 2-1/2" (63MM) | IPTBCIM450G          | IPTBCIM450G     | IPTBCIM550G   | IPTBCIM650G       | IPTBCIM850G   | IPTBCIM850G       | IPTBCIM1050G | IPTBCIM1050G      | IPTBCIM1250G   |
| 3" (75MM)     | IPTBCIM450G          | IPTBCIM550G     | IPTBCIM550G   | IPTBCIM650G       | IPTBCIM850G   | IPTBCIM850G       | IPTBCIM1050G | IPTBCIM1050G      | IPTBCIM1250G   |
| 3-1/2" (88MM) | IPTBCIM550G          | IPTBCIM550G     | IPTBCIM650G   | IPTBCIM850G       | IPTBCIM850G   | IPTBCIM1050G      | IPTBCIM1050G | IPTBCIM1250G      | IPTBCIM1250G   |
| 4" (102MM)    | IPTBCIM550G          | IPTBCIM650G     | IPTBCIM650G   | IPTBCIM850G       | IPTBCIM850G   | IPTBCIM1050G      | IPTBCIM1050G | IPTBCIM1250G      | IPTBCIM1250G   |
| 5" (127MM)    | IPTBCIM850G          | IPTBCIM850G     | IPTBCIM850G   | IPTBCIM1050G      | IPTBCIM1050G  | IPTBCIM1050G      | IPTBCIM1250G | IPTBCIM1250G      |                |
| 6" (152MM)    | IPTBCIM850G          | IPTBCIM850G     | IPTBCIM1050G  | IPTBCIM1050G      | IPTBCIM1250G  | IPTBCIM1250G      |              |                   |                |
| 8" (203MM)    | IPTBCIM1050G         | IPTBCIM1050G    | IPTBCIM1250G  | IPTBCIM1250G      |               |                   |              |                   |                |
| 10" (254MM)   | IPTBCIM1250G         | IPTBCIM1250G    |               |                   |               |                   |              |                   |                |

Refer to this table for details about the pipe support model and its packaging information.

## Packaging

| Part number  | Nominal inside opening |      | Box quantity |       |      |
|--------------|------------------------|------|--------------|-------|------|
|              | [inch]                 | [mm] | [pcs]        | [lbs] | [kg] |
| IPTBCIM250G  | 2.50                   | 64   | 126          | 14.0  | 6.5  |
| IPTBCIM350G  | 3.50                   | 89   | 86           | 13.0  | 6.0  |
| IPTBCIM450G  | 4.50                   | 114  | 48           | 10.0  | 4.5  |
| IPTBCIM550G  | 5.50                   | 140  | 36           | 9.0   | 4.0  |
| IPTBCIM650G  | 6.50                   | 165  | 34           | 10.0  | 4.5  |
| IPTBCIM850G  | 8.50                   | 216  | 10           | 13.0  | 5.9  |
| IPTBCIM1050G | 10.50                  | 266  | 8            | 16.0  | 7.2  |
| IPTBCIM1250G | 12.50                  | 321  | 7            | 16.5  | 7.5  |

All data and technical information are based on results achieved under the specific conditions defined according to the testing standards referenced. Despite taking every precaution to ensure that said data and technical information are up to date, Armacell does not make any representation or warranty, express or implied, as to the accuracy, content or completeness of said data and technical information. Armacell also does not assume any liability towards any person resulting from the use of said data or technical information. Armacell reserves the right to revoke, modify or amend this document at any moment. It is the customer's responsibility to verify if the product is suitable for the intended application. The responsibility for professional and correct installation and compliance with relevant building regulations lies with the customer. This document does not constitute nor is part of a legal offer to sell or to contract.

At Armacell, your trust means everything to us, so we want to let you know your rights and make it easier for you to understand what information we collect and why we collect it. If you would like to find out about our processing of your data, please visit our [Data Protection Policy](#).

© Armacell, 2021. Insuguard is a trademark of the Armacell Group.  
00326 | Insuguard Multi | Insuguard | TDS | 12021 | NA | EN-A

## ABOUT ARMACELL

---

As the inventors of flexible foam for equipment insulation and a leading provider of engineered foams, Armacell develops innovative and safe thermal, acoustic and mechanical solutions that create sustainable value for its customers. Armacell's products significantly contribute to global energy efficiency making a difference around the world every day. With 3,135 employees and 24 production plants in 16 countries, the company operates two main businesses, Advanced Insulation and Engineered Foams. Armacell focuses on insulation materials for technical equipment, high-performance foams for high-tech and lightweight applications and next generation aerogel blanket technology.

For more information, please visit:  
[www.armacell.us](http://www.armacell.us) and [www.insuguard.com](http://www.insuguard.com)







Don't be  
fooled by  
imitations.

TRUST THE ORIGINAL

# Insuguard Pipe Saddles

Insuguard® is the patented, easy-to-install pipe saddle for HVAC/R applications. Insuguard is today's most practical and economical solution to standardize pipe installations, improve appearance and completely eliminate premature insulation tears, costly leaks and loss of refrigerated merchandise caused by inadequate suspension systems.

- // The original innovative design
- // Field tested and installed for over 15 years
- // Specified by leading supermarket and retail chains
- // Ask for the product trusted by the industry
- // Applicable with all insulation products

[www.armacell.us](http://www.armacell.us) | [www.insuguard.com](http://www.insuguard.com)



 **armacell**<sup>®</sup>  
Insuguard<sup>®</sup>

## TECHNICAL DATA - INSUGUARD

|                          |  |
|--------------------------|--|
| <b>Brief description</b> | Insuguard is the original 1-piece, saddle-shaped pipe support for strut channel. Insuguard saddles are applicable with all insulation products.  |
| <b>Material</b>          | Polypropylene copolymer (IPTBCI825B & IPTBCI825W are 20% glass-filled polypropylene for added strength)  |
| <b>Color</b>             | Black and white  |
| <b>Special features</b>  | The inside surface of the saddle-shaped pipe support is non-adhesive and has a special texture that acts as micro bubbles to create a thin layer of air between the saddle and the insulation. This helps the insulated pipe to expand and move freely within the saddle without damaging the insulation material. |
| <b>Applications</b>      | Horizontal pipe installation on plumbing, mechanical, refrigeration and air-conditioning applications.   |
| <b>Installation</b>      | Tool-free, clips directly on standard 1-5/8" x 1-5/8" (42mm x 42mm) strut channel. Suited for horizontal pipe installation.  |

| Property                                | Value/Assessment       | Test method  |
|---|------------------------|--|
| <b>Temperature range</b>                |                        |  |
| Max. service temperature                | +178 °F (+81 °C)       |  |
| Min. service temperature                | -40 °F (-40 °C)        |  |
| <b>Fire performance &amp; approvals</b> |                        |  |
| Surface spread of flame                 | UL Classified for US   | UL-723, ASTM E84   |
|   | ULC listed for Canada. | ULC-S102.2   |
|   |                        | Flame Spread Index (110 - 135)*/Smoked Developed Index 500 |
|   |                        | Flame Spread Index 130/Smoked Developed Index 550          |

\* Value depends on size.

### Other technical features

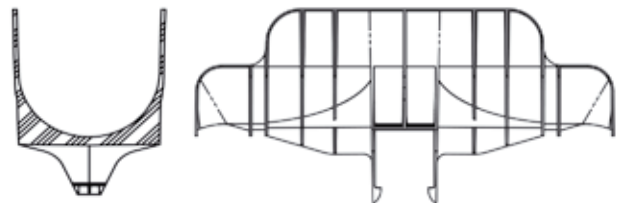
|               |   |
|---------------|---|
| UV resistance | Excellent   |
| Surface       | Non-abrasive surface for linear expansion of thermal insulation |
| Paintable     | Preserves mechanical properties even after painting             |



## SPECIFICATIONS

### INSUGUARD SADDLES

| Part Number       | Color | Size: In | Size: mm | Length: In | Length: mm |
|-------------------|-------|----------|----------|------------|------------|
| <b>IPTBCI225B</b> | Black | 2.250"   | 57mm     | 12"        | 305mm      |
| <b>IPTBCI325B</b> | Black | 3.250"   | 82mm     | 12"        | 305mm      |
| <b>IPTBCI425B</b> | Black | 4.250"   | 108mm    | 12"        | 305mm      |
| <b>IPTBCI525B</b> | Black | 5.250"   | 133mm    | 12"        | 305mm      |
| <b>IPTBCI625B</b> | Black | 6.250"   | 159mm    | 12"        | 305mm      |
| <b>IPTBCI825B</b> | Black | 8.250"   | 209mm    | 12"        | 305mm      |
| <b>IPTBCI225W</b> | White | 2.250"   | 57mm     | 12"        | 305mm      |
| <b>IPTBCI325W</b> | White | 3.250"   | 82mm     | 12"        | 305mm      |
| <b>IPTBCI425W</b> | White | 4.250"   | 108mm    | 12"        | 305mm      |
| <b>IPTBCI525W</b> | White | 5.250"   | 133mm    | 12"        | 305mm      |
| <b>IPTBCI625W</b> | White | 6.250"   | 159mm    | 12"        | 305mm      |
| <b>IPTBCI825W</b> | White | 8.250"   | 209mm    | 12"        | 305mm      |



InsuCover®

InsuCover pipe cover is designed to fit over the insulated pipe and can be quickly secured with cable ties since both the saddle and the cover have matching notches for easy tool-free installation. The flexible design allows it to automatically adjust to the pipe’s curve, large and small. A quick knife cut at the seams allows the installer to customize the width for smaller pipes. Its curved edges allow for the same range of movement as the Insuguard saddle, keeping the pipe supported, secure, but able to give to natural pipe expansion.

InsuCover Pipe Shield

| Part number        | Size        | Color | For Use With   |
|--------------------|-------------|-------|--|
| <b>IPTBCUCX25B</b> | 12" (305mm) | Black | IPTBCI225B, IPTBCI325B, IPTBCI425B, IPTBCI525B, IPTBCI625B |
| <b>IPTBCUC825B</b> | 12" (305mm) | Black | IPTBCI825B   |
| <b>IPTBCUCX25W</b> | 12" (305mm) | White | IPTBCI225W, IPTBCI325W, IPTBCI425W, IPTBCI525W, IPTBCI625W |
| <b>IPTBCUC825W</b> | 12" (305mm) | White | IPTBCI825W   |

| Property                     | Value/Assessment       | Test method      |  |
|------------------------------|------------------------|------------------|--|
| Temperature range            |                        |                  |  |
| Max. service temperature     | +178 °F (+81 °C)       |                  |  |
| Min. service temperature     | -40 °F (-40 °C)        |                  |  |
| Fire performance & approvals |                        |                  |  |
| Surface spread of flame      | UL Classified for US   | UL-723, ASTM E84 | Flame Spread Index (110 - 135)*/Smoked Developed Index 500 |
|                              | ULC listed for Canada. | ULC-S102.2       | Flame Spread Index 130/Smoked Developed Index 500          |

\* Value depends on size.

Other technical features

|               |   |
|---------------|---|
| UV resistance | Excellent   |
| Paintable     | Preserves mechanical properties even after painting |



Choose the right product for corresponding pipe and insulation thickness.

Copper tubes

| Copper tubing size | Insulation thickness |             |           |               |           |
|--------------------|----------------------|-------------|-----------|---------------|-----------|
|                    | 1/2" (13mm)          | 3/4" (19mm) | 1" (25mm) | 1-1/2" (38mm) | 2" (50mm) |
| 1/4" (6.4MM)       | IPTBCI225            | IPBICI225   | IPBICI325 | IPBICI425     | IPBICI525 |
| 3/8" (9.5MM)       | IPBICI225            | IPBICI225   | IPBICI325 | IPBICI425     | IPBICI525 |
| 1/2" (13MM)        | IPBICI225            | IPBICI225   | IPBICI325 | IPBICI425     | IPBICI525 |
| 5/8" (16MM)        | IPBICI225            | IPBICI225   | IPBICI325 | IPBICI425     | IPBICI525 |
| 3/4" (19MM)        | IPBICI225            | IPBICI325   | IPBICI325 | IPBICI425     | IPBICI525 |
| 7/8" (22MM)        | IPBICI225            | IPBICI325   | IPBICI325 | IPBICI425     | IPBICI525 |
| 1-1/8" (28.5MM)    | IPBICI325            | IPBICI325   | IPBICI425 | IPBICI525     | IPBICI625 |
| 1-3/8" (35MM)      | IPBICI325            | IPBICI325   | IPBICI425 | IPBICI525     | IPBICI625 |
| 1-5/8" (41MM)      | IPBICI325            | IPBICI425   | IPBICI425 | IPBICI525     | IPBICI625 |
| 2-1/8" (54MM)      | IPBICI425            | IPBICI425   | IPBICI525 | IPBICI625     | IPBICI825 |
| 2-5/8" (67MM)      | IPBICI425            | IPBICI525   | IPBICI525 | IPBICI625     | IPBICI825 |
| 4-1/8" (105MM)     | IPBICI525            | IPBICI525   | IPBICI625 | IPBICI825     | IPBICI825 |
| 5-1/8" (130MM)     | IPBICI525            | IPBICI825   | IPBICI825 | IPBICI825     | ~         |

SCH. 40/80 Pipe

| Copper tubing size | Insulation thickness |             |           |               |           |
|--------------------|----------------------|-------------|-----------|---------------|-----------|
|                    | 1/2" (13mm)          | 3/4" (19mm) | 1" (25mm) | 1-1/2" (38mm) | 2" (50mm) |
| 1/4" (6.4MM)       | IPBICI225            | IPBICI225   | IPBICI325 | IPBICI425     | IPBICI525 |
| 3/8" (9.5MM)       | IPBICI225            | IPBICI225   | IPBICI325 | IPBICI425     | IPBICI525 |
| 1/2" (13MM)        | IPBICI225            | IPBICI325   | IPBICI325 | IPBICI425     | IPBICI525 |
| 3/4" (19MM)        | IPBICI225            | IPBICI325   | IPBICI325 | IPBICI425     | IPBICI525 |
| 1" (25MM)          | IPBICI325            | IPBICI325   | IPBICI425 | IPBICI525     | IPBICI625 |
| 1-1/4" (31MM)      | IPBICI325            | IPBICI325   | IPBICI425 | IPBICI525     | IPBICI625 |
| 1-1/2" (38MM)      | IPBICI325            | IPBICI425   | IPBICI425 | IPBICI525     | IPBICI625 |
| 2" (50MM)          | IPBICI425            | IPBICI425   | IPBICI425 | IPBICI525     | IPBICI625 |
| 2-1/2" (62MM)      | IPBICI425            | IPBICI525   | IPBICI525 | IPBICI625     | IPBICI825 |
| 3" (75mm)          | IPBICI525            | IPBICI525   | IPBICI625 | IPBICI825     | IPBICI825 |
| 3-1/2" (88MM)      | IPBICI525            | IPBICI625   | IPBICI625 | IPBICI825     | IPBICI825 |
| 4" (100MM)         | IPBICI625            | IPBICI625   | IPBICI825 | IPBICI825     | IPBICI825 |
| 5" (127MM)         | IPBICI825            | IPBICI825   | IPBICI825 | ~             | ~         |
| 6" (152MM)         | IPBICI825            | IPBICI825   | ~         | ~             | ~         |

Packaging Information

| Item       | Pieces | Weight: LBS | Weight: KG |
|------------|--------|-------------|------------|
| IPBICI225  | 65     | 17          | 7.7        |
| IPBICI325  | 38     | 14          | 6.4        |
| IPBICI425  | 25     | 13          | 5.0        |
| IIPBICI525 | 16     | 11          | 4.5        |
| IPBICI625  | 12     | 7           | 2.1        |

All data and technical information are based on results achieved under the specific conditions defined according to the testing standards referenced. Despite taking every precaution to ensure that said data and technical information are up to date, Armacell does not make any representation or warranty, express or implied, as to the accuracy, content or completeness of said data and technical information. Armacell also does not assume any liability towards any person resulting from the use of said data or technical information. Armacell reserves the right to revoke, modify or amend this document at any moment. It is the customer's responsibility to verify if the product is suitable for the intended application. The responsibility for professional and correct installation and compliance with relevant building regulations lies with the customer. This document does not constitute nor is part of a legal offer to sell or to contract.

At Armacell, your trust means everything to us, so we want to let you know your rights and make it easier for you to understand what information we collect and why we collect it. If you would like to find out about our processing of your data, please visit our [Data Protection Policy](#).

© Armacell, 2020. Insuguard is a trademark of the Armacell Group.  
00327 | Insuguard | Insuguard | TDS | 112020 | NA | EN-A

## ABOUT ARMACELL

---

As the inventors of flexible foam for equipment insulation and a leading provider of engineered foams, Armacell develops innovative and safe thermal, acoustic and mechanical solutions that create sustainable value for its customers. Armacell's products significantly contribute to global energy efficiency making a difference around the world every day. With 3,135 employees and 24 production plants in 16 countries, the company operates two main businesses, Advanced Insulation and Engineered Foams. Armacell focuses on insulation materials for technical equipment, high-performance foams for high-tech and lightweight applications and next generation aerogel blanket technology.

For more information, please visit:  
[www.armacell.us](http://www.armacell.us) and [www.insuguard.com](http://www.insuguard.com)

